

We are here!

## How do I reach Queensborough Community College?

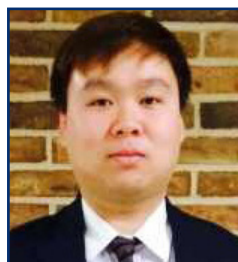
Queensborough is located in Bayside on 56th Ave. between Springfield and Cloverdale (223rd St.) Boulevards.

**By car:** The campus is just a few blocks north of the Springfield Blvd. exit on the LIE and immediately south of the Northern Blvd. exit on the Cross Island Parkway.

**By bus:** Take the Q27 from Main Street directly onto the campus. Or take the Q30 from Jamaica via Horace Harding Blvd. to 56th Ave. The bus stop is located across the street from our building.

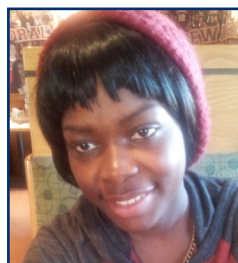
**By bus from Nassau County:** Take the N-20, 21 bus line, which stops on Northern Blvd. and 223rd St. (Cloverdale Blvd.). Then walk south to 56th Ave. and walk West (right) to the testing (Y) building.

## Students Speak:



**Siu Ho (Tommy)**

*"Two years ago I was in CLIP. Last year I started towards my degree. This year I made the Dean's Honor List. You could be next!"*



**Cherly Destra**

*"I love CLIP because it helped me to become a good writer and develop good friendships."*



**Xue Wen Fang (Scarlet)**

*"CLIP is perfect!"*



## CUNY LANGUAGE IMMERSION PROGRAM (CLIP)

**Dr. Diana Berkowitz, Director**

**Adriana Kaufman, Office Manager**

**Spanish Speaker  
9:00am - 1:00pm**

**CUNY Language Immersion Program**

**Y2 (Testing building)**

**222-05 56th Avenue**

**Bayside, NY 11364**

**Telephone 718.281.5460**

**[www.qcc.cuny.edu/clip/](http://www.qcc.cuny.edu/clip/)**

## What is the CUNY Language Immersion Program?

The CUNY Language Immersion Program (CLIP) offers you the opportunity to study English full-time (25 hours a week) before you enroll in formal college courses. Students do not take additional college courses while they are attending CLIP.

## What will I study when I attend CLIP?

You will study college preparation English, which includes reading, writing, listening, and speech. You will learn skills for studying more efficiently, taking notes, doing research, using the computer and taking tests. You will also increase your college knowledge.

## Who may attend the program?

CLIP is for entering freshmen who have already been admitted to CUNY and who need additional English as a Second Language classes before attending college. CLIP is also for students who have not been successful in their college ESL courses.

## What are the benefits of attending the program?

- No need to use your Financial Aid.
- Automatic entry or re-entry into college.
- An opportunity to take Freshmen Skills Placement Tests again.
- New state-of-the-art computer lab.

## Who are the teachers?

The teachers are all highly trained and experienced in teaching ESL to college students.

## How long may I stay in the Program?

The maximum time you can study in this program is two long semesters and one short semester, for a maximum total of 900 hours.

After you complete this program, you will have an opportunity to retake the CUNY reading, writing, and speech placement exams again.

We will also assist you with returning to college.

## Will I have any difficulty returning to my college after I complete the Language Immersion Program?

No. You will receive the help you need when you are ready to return to college.

## When do classes meet?

Day classes:	Mon - Fri, 8:45 am – 2:15 pm
Afternoon classes:	Mon - Fri, 2:30 pm – 8:00 pm
Evening classes:	Mon - Fri, 5:00 pm – 10:00 pm (plus 2.5 hours on-line component)

Summer only:

Day:	Mon - Thurs, 8:15 am – 2:15 pm
Afternoon classes:	Mon - Thurs, 2:30 pm – 8:30 pm
Evening:	Mon - Thurs, 5:00 pm – 10:00 pm (some Fridays)

## When do sessions begin and end?

The Summer 2017 session goes from June 26 to August 8.

The Summer session is 6 weeks long.

The Fall 2017 session goes from September 5 to December 21. The session is for a full semester.

The Spring 2018 session goes from January 30 to June 5. The session is for a full semester.

## How much does the Language Immersion Program cost?

NYC residents:	\$180 for fall or spring \$ 75 for summer
Non-NYC residents:	\$450 for fall or spring \$180 for summer
College Discovery and SEEK students	\$ 45 for fall or spring \$ 18 for summer
Public assistance recipients:	\$ 45 for fall or spring \$ 18 for summer

## Will I have to use my financial aid to pay for the Language Immersion Program?

No, during the time you spend in the program, you will not be using your financial aid.

## How can I get more information?

Call the office at 718-281-5460 or come to Building Y2, from 9:00 am to 5:00 pm Monday through Friday.

