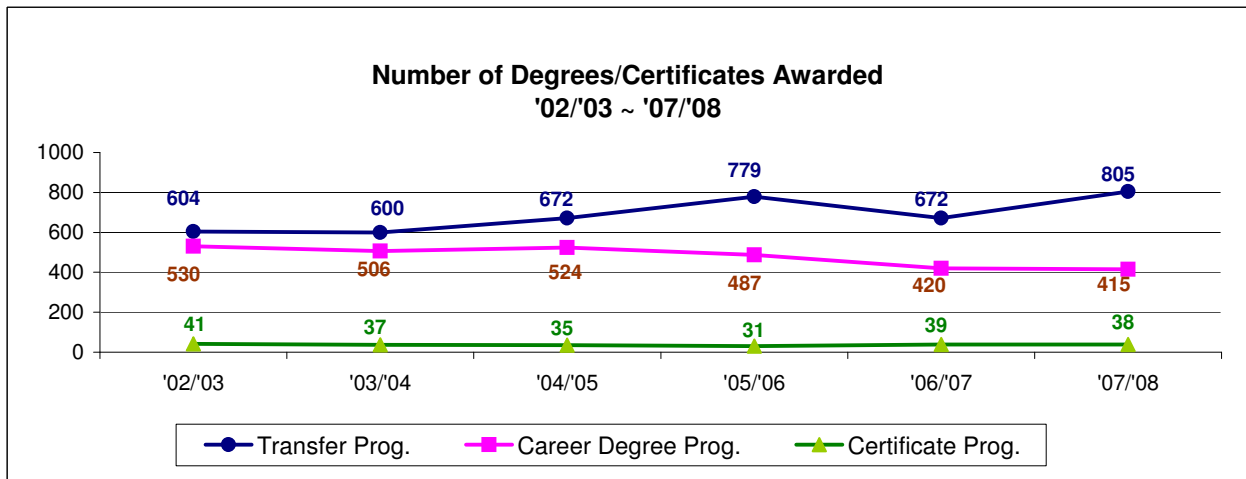


## **D. QCC GRADUATION STATISTICS**

- Number of Degrees/Certificates Awarded by Curriculum
- Four and One-year Trend Analysis (Degrees Awarded)
- Degree – Ethnicity and Six-year Graduation Rate (FTFT)
- CPE Pass Rate
- Fall '02 Cohort of First-time Matriculated Freshmen
- Six-month Post-graduate Employment Outcomes
- Historic Graduation Statistics



**Number of Degrees Awarded by Curriculum  
02/03 - 07/08**

QCC Codes		Degree	02/03	03/04	04/05	05/06	06/07	07/08
<b>TRANSFER DEGREE PROGRAMS</b>								
BT1	Business Administration	A.S.	153	186	174	220	171	243
EH1	Environmental Health	A.S.	2	1	1	0	0	0
FA1	Visual and Performing Arts	A.S.	40	42	36	40	40	30
HS1	Health Sciences	A.S.	23	10	21	35	23	20
LA1	Liberal Arts & Sciences	A.A.	317	267	335	359	338	389
LE1	Dual/Joint Lib. Arts & Sci. & Ed.	A.A./B.A.	26	36	38	44	32	49
LS1	Liberal Arts & Sciences	A.S.	60	51	66	67	57	68
PE1	Engineering Science	A.S.	4	7	1	13	10	5
WE1	Liberal Arts & Sciences - weekend	A.A.				1	1	1
<b>Sub total</b>			<b>625</b>	<b>600</b>	<b>672</b>	<b>779</b>	<b>672</b>	<b>805</b>
<b>CAREER DEGREE PROGRAMS</b>								
BA2	Business Accounting	A.A.S.	51	53	49	48	36	48
BM2	Business Management	A.A.S.	56	56	53	70	40	27
BS2	Office Administration & Technology	A.A.S.	28	28	28	15	28	20
CT2	Computer Engineering Tech.	A.A.S.	41	34	28	17	18	17
DA2	Digital Art & Design	A.A.S.	-	2	15	21	19	24
DD2	Comp. Architectural & Indust. Design	A.A.S.	16	16	16	9	6	9
DP2	Computer Information Systems	A.A.S.	159	141	109	70	33	38
EM2	New Media Technology	A.A.S.	-	3	13	9	8	4
ET2	Electronic Engineering Tech.	A.A.S.	11	13	14	11	18	17
ME2	Music Electronic Tech.	A.A.S.	17	21	28	26	25	15
ML2	Medical Laboratory Technology	A.A.S.	5	1	0	0	1	0
MT2	Mechanical Engineering Tech	A.A.S.	9	7	5	2	4	7
NS2	Nursing Science	A.A.S.	96	99	129	136	142	139
PL2	Laser and Fiber Optics Tech.	A.A.S.	3	1	5	2	2	2
TC2	Telecon Tech	A.A.S.		3	5	1	3	5
TM2	Message Therapy	A.A.S.			12	22	20	22
TX2	Telecom. Tech - Verizon	A.A.S.	38	28	15	28	17	21
<b>Sub total</b>			<b>530</b>	<b>506</b>	<b>524</b>	<b>487</b>	<b>420</b>	<b>415</b>
<b>CERTIFICATE PROGRAMS</b>								
AP3	Photography	Cert.	1	0	5	2	5	2
BC3	School Secretary	Cert.	5	3	2	3	9	2
BD3	Computer Information Systems	Cert.	10	11	6	1	2	3
BH3	Health Care Off Admin.	Cert.		1	3	1	6	6
BW3	Word Processing (Microsoft Office)	Cert.	10	5	2	2	0	0
CM3	Computerized Manufacturing Tech.	Cert.	1	5	4	5	2	0
DC3	Day Care Asst.	Cert.			3	2	7	5
EN3	New Media Technology	Cert.	-	1	0	1	2	1
MO3	Medical Office Assistant	Cert.	14	11	10	14	6	19
<b>Sub total</b>			<b>41</b>	<b>37</b>	<b>35</b>	<b>31</b>	<b>39</b>	<b>38</b>
<b>Grand total</b>			<b>1,196</b>	<b>1,143</b>	<b>1,231</b>	<b>1,297</b>	<b>1,131</b>	<b>1,258</b>

Note: BM includes concentration in Marketing, Real Estate & Insurance, Transportation, Entrepreneurial

Source: Degree audit report to CUNY/Office of the Registrar

Annual = August, January & June

1=A.A., A.S., 2=A.A.S., 3=Certificate

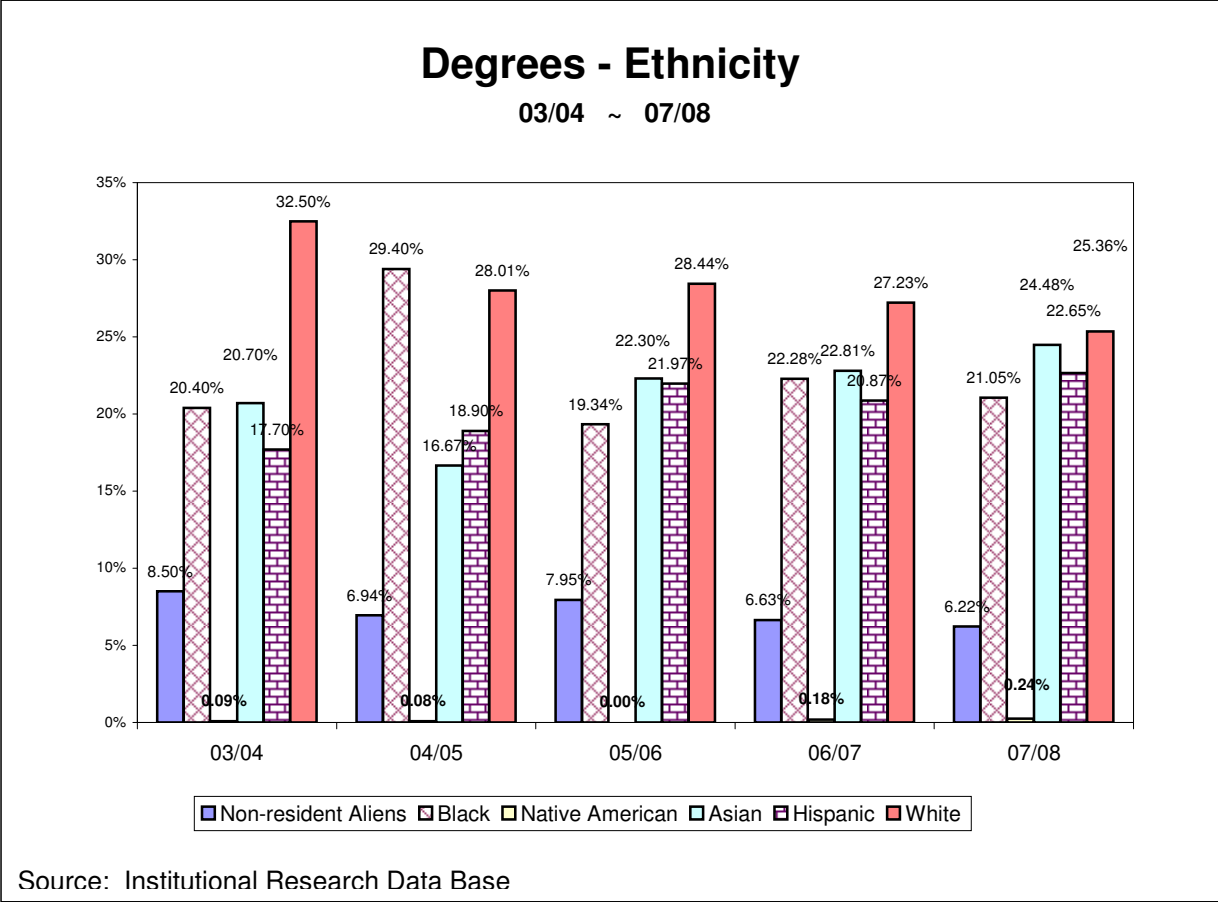
## Four and One-year Trend Analysis Degrees Awarded '03/'04, '06/'07, '07/'09

QCC Codes	Degree	'03/'04	'07/'08	Growth % '04/'08	'06/'07	'07/'08	Growth % '07/'08	
<b>TRANSFER DEGREE PROGRAMS</b>								
BT1	Business Administration	A.S.	186	243	30.65%	171	243	42.11%
EH1	Environmental Health	A.S.	1	0	-100.00%	0	0	-
FA1	Visual and Performing Arts	A.S.	42	30	-28.57%	40	30	-25.00%
HS1	Health Sciences	A.S.	10	20	100.00%	23	20	-13.04%
LA1	Liberal Arts & Sciences	A.A.	267	389	45.69%	338	389	15.09%
LE1	Dual/Joint Lib. Arts & Sci. & Ed.	A.A./B.A.	36	49	36.11%	32	49	53.13%
LS1	Liberal Arts & Sciences	A.S.	51	68	33.33%	57	68	19.30%
PE1	Engineering Science	A.S.	7	5	-28.57%	10	5	-50.00%
WE1	Liberal Arts & Sciences - weekend	A.A.		1	New	1	1	0.00%
<b>Sub total</b>			<b>600</b>	<b>805</b>	<b>34.17%</b>	<b>672</b>	<b>805</b>	<b>19.79%</b>
<b>CAREER DEGREE PROGRAMS</b>								
BA2	Business Accounting	A.A.S.	53	48	-9.43%	36	48	33.33%
BM2	Business Management	A.A.S.	56	27	-51.79%	40	27	-32.50%
BS2	Office Administration & Technology	A.A.S.	28	20	-28.57%	28	20	-28.57%
CT2	Computer Engineering Tech.	A.A.S.	34	17	-50.00%	18	17	-5.56%
DA2	Digital Art/Design	A.A.S.	2	24	1100.00%	19	24	26.32%
DD2	Comp. Architectural & Indust. Design	A.A.S.	16	9	-43.75%	6	9	50.00%
DP2	Computer Information Systems	A.A.S.	141	38	-73.05%	33	38	15.15%
EM2	New Media Tech.	A.A.S.	3	4	33.33%	8	4	-50.00%
ET2	Electronic Engineering Tech.	A.A.S.	13	17	30.77%	18	17	-5.56%
ME2	Music Electronic Tech.	A.A.S.	21	15	-28.57%	25	15	-40.00%
ML2	Medical Laboratory Technology	A.A.S.	1	0	-100.00%	1	0	-100.00%
MT2	Mechanical Engineering Tech	A.A.S.	7	7	0.00%	4	7	75.00%
NS2	Nursing Science	A.A.S.	99	139	40.40%	142	139	-2.11%
PL2	Laser and Fiber Optics Tech.	A.A.S.	1	2	100.00%	2	2	0.00%
TC2	Telecommunications Tech.	A.A.S.	3	5	66.67%	3	5	66.67%
TM2	Message Therapy	A.A.S.		22	New	20	22	10.00%
TX2	Telecommunications Tech - Verizon	A.A.S.	28	21	-25.00%	17	21	23.53%
<b>Sub total</b>			<b>506</b>	<b>415</b>	<b>-17.98%</b>	<b>420</b>	<b>415</b>	<b>-1.19%</b>
AP3	Photography	Cert.	0	2	200.00%	5	2	-60.00%
BC3	School Secretary	Cert.	3	2	-33.33%	9	2	-77.78%
BD3	Computer Information Systems	Cert.	11	3	-72.73%	2	3	50.00%
BH3	Health Care Office	Cert.	1	6	500.00%	6	6	0.00%
BW3	Word Processing (Microsoft Office)	Cert.	5	0	-100.00%	0	0	-
CM3	Computerized Manufacturing Tech.	Cert.	5	0	-100.00%	2	0	-100.00%
DC3	Day Care Asst.	Cert.	0	5	New	7	5	-28.57%
EN3	New Media Tech.	Cert.	1	1	0.00%	2	1	-50.00%
MO3	Medical Office Assistant	Cert.	11	19	72.73%	6	19	216.67%
<b>Sub total</b>			<b>37</b>	<b>38</b>	<b>2.70%</b>	<b>39</b>	<b>38</b>	<b>-2.56%</b>
<b>Grand total</b>			<b>1,143</b>	<b>1,258</b>	<b>10.06%</b>	<b>1,131</b>	<b>1,258</b>	<b>11.23%</b>

Source: Institutional Research and Assessment

Note: BM includes concentration in Marketing, Real Estate & Insurance, Transportation, Entrepreneurial  
- Formula not applicable.

The graduation rate for Transfer degree programs has increased 19.79% over the five year period 02/03 ~07/08. Career degree programs exhibited a five-year decline of 1.19%.

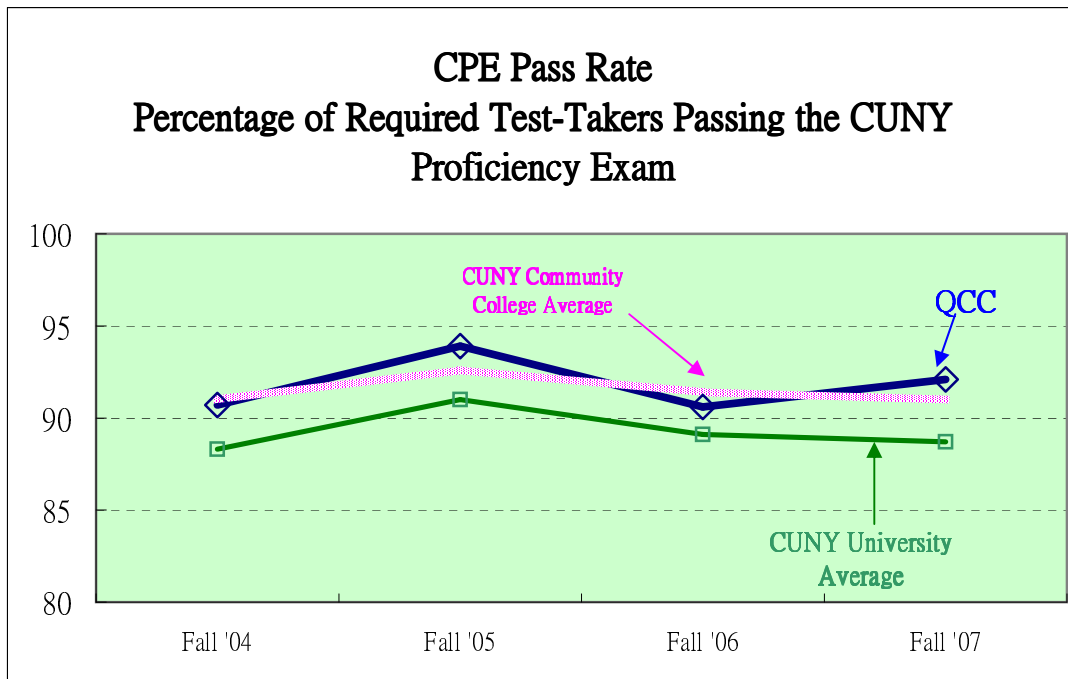


### Six-year Graduation Rate

First-time, Full-time Freshmen  
1999, 2000, 2001, and 2002

	Total First-time Freshmen	QCC Degree	Grad. Other CUNY	Still Enroll. QCC	Enroll. Other CUNY	Earned Certificate	Not Enrolled at CUNY	Six-year Grad. Rate from QCC	Grad. Rate from Other CUNY
1999	1,748	386	74	51	62	10	1,165	22.08%	4.23%
2000	1,736	471	79	67	58	5	1,056	27.13%	4.55%
2001	1,731	420	79	53	73	5	1,100	24.26%	4.56%
2002	1,742	456	81	61	86	6	1,052	26.18%	4.65%

Source: Institutional Research Data Base



The CPE is a three-hour test that has been designed to assess reading comprehension, critical thinking about ideas and information, correct writing usage and logic, and the ability to interpret and evaluate materials presented in charts and graphs.

Students must pass the CPE to graduate from associate degree programs.

Senior colleges of the City University of New York may provisionally admit transfers from CUNY community colleges only if all other graduation requirements have been completed except the CPE. These students must take the CPE in their first semester at a CUNY senior college.

The indicator reflects the percentage of students who passed the CPE based on the students counted as test-takers for the CPE show rate. The pass rate reflects the best outcome for tests taken that fall or in the subsequent winter or spring administrations (longitudinal pass rate).

## Queensborough Community College

### Fall '02 Cohort of First-time Matriculated Freshmen

(Full-time and Part-time)

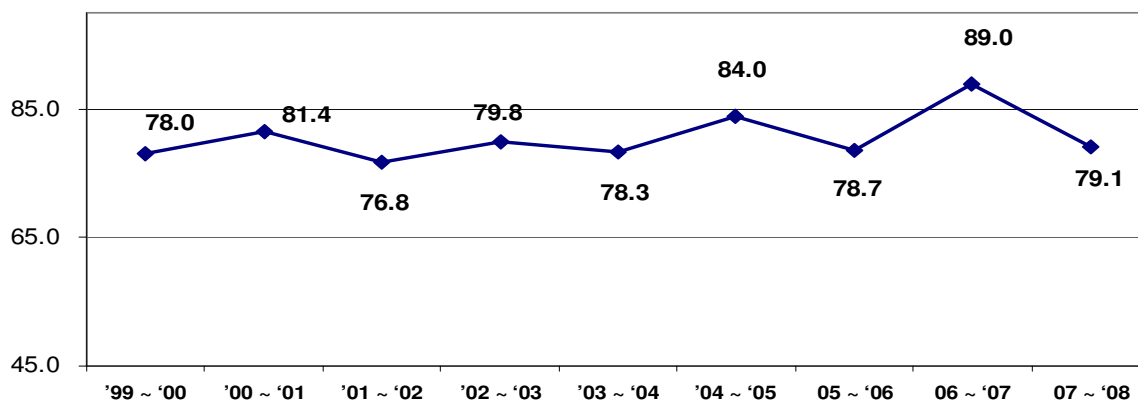
Status: November 2008

	Degrees	All Freshmen
<b>Matriculated First-time Freshmen = 2,175</b>	Associate Degrees	<b>559</b>
	Certificates	<b>12</b>
	BA/BS/BBA	<b>191</b>
	MA/MS	<b>4</b>
<b>Received QCC degree, then enrolled in further education: 334</b>		
<b>Top Four Colleges</b>	Queens:	83
	Baruch:	30
	York:	17
	St. John's:	12
<b>Transferred without QCC degree: 506</b>		
<b>Top 10 Colleges</b>	Nassau:	75
	Queens:	60
	LaGuardia:	44
	St. John's:	24
	BMCC:	22
	Baruch:	19
	York:	18
	Touro:	16
	Hunter:	15
	Stony Brook:	9

Source: Institutional Records and Planning and National Student Clearinghouse.

## Six-month Post-graduate Employment Outcomes

### Six-month Employment Rate AY '99~'08



Source: QCC post-graduate survey

#### The top three employment locations for QCC graduates

<b>06~07</b>	Queens (45.1%)	Nassau (16.9%)	Manhattan (14.5%)
<b>07~08</b>	Queens (57.4%)	Manhattan (17.2%)	Nassau (13.2%)

#### The top three fields in which QCC graduates find jobs

<b>06~07</b>	Healthcare (27.2%)	Education (9.3%)	Administration/Office (9.3%)
<b>07~08</b>	Healthcare (18.9%)	Administration/Office (10.7%)	Education (10.4%)

#### The top three reasons why QCC graduates accept a job offer

<b>06~07</b>	To gain experience (38.9%)	Exactly what I wanted (17.5%)	Best offer (15.7%)
<b>07~08</b>	To gain experience (37.6%)	Location (17.5%)	Best offer (17.3%)

**Historic Graduation Statistics**

June 1962 to Aug. 2008

Degrees Awarded

<b>TRANSFER PROGRAMS</b>		
Liberal Arts	LA1	12,506
Business Administration	BT1	4,802
Environmental Health	EH1	123
Visual & Performing Arts	FA1	702
Liberal Arts & Science	LS1	1,573
Engineering Science	PE1	539
Dual/Joint AA/BA	LE1	661
Health Sciences	HS1	239
Liberal Arts - Business	LB1	103 (No longer offered)
Liberal Arts - Science	LS1	51 (No longer offered)
<b>Sub-total:</b>		<b>21,299</b>
<b>CAREER PROGRAMS</b>		
Business Accounting	BA2	2,102
Business Management - Marketing	BM2	3,894
Business Management - Real Estate & Insur.	BL2	396
Business Mgmt. - Transportation	BN2	259
Business Mgmt. - Entrepreneurship	BE2	14
Office Administration & Tech.	BS2	2,692
Computer Information Systems	DP2	3,074
Electrical Engineering Tech.	ET2	2,402
Computer Engineering Tech.	CT2	1,587
New Media Technology	EM2	39
Mechanical Engineering Tech.	MT2	830
Computerized Architectural and Industrial Design	DD2	881
Nuclear Physics & Health Tech.	PN2	22 (No longer offered)
Music Electronic Technology	ME2	221
Digital Art & Design	DA2	85
Laser & Fiber Optics Engineering Tech.	PL2	205
Telecommunications: Verizon	TX2	275
Telecommunications Tech.	TC2	33
Nursing	NS2	6,421
Medical Laboratory Tech.	ML2	949
Massage Therapy	TM2	74
<b>Sub-total:</b>		<b>26,455</b>
<b>CERTIFICATE PROGRAMS</b>		
Photography	AP3	119
Computer Information Systems	BD3	469
Microsoft Office Applications	BW3	1,367
School Secretary	BC3	37
Computerized Manufacturing Tech.	CM3	31
New Media Technology	EN3	5
Medical Office Assistant	MO3	522
Health Care Office Administration	BH3	18
Day Care Assistant	DC3	18
<b>Sub-total:</b>		<b>2,586</b>
<b>Grand Total:</b>		<b>50,340</b>

Source: Institutional Records &amp; Planning Department