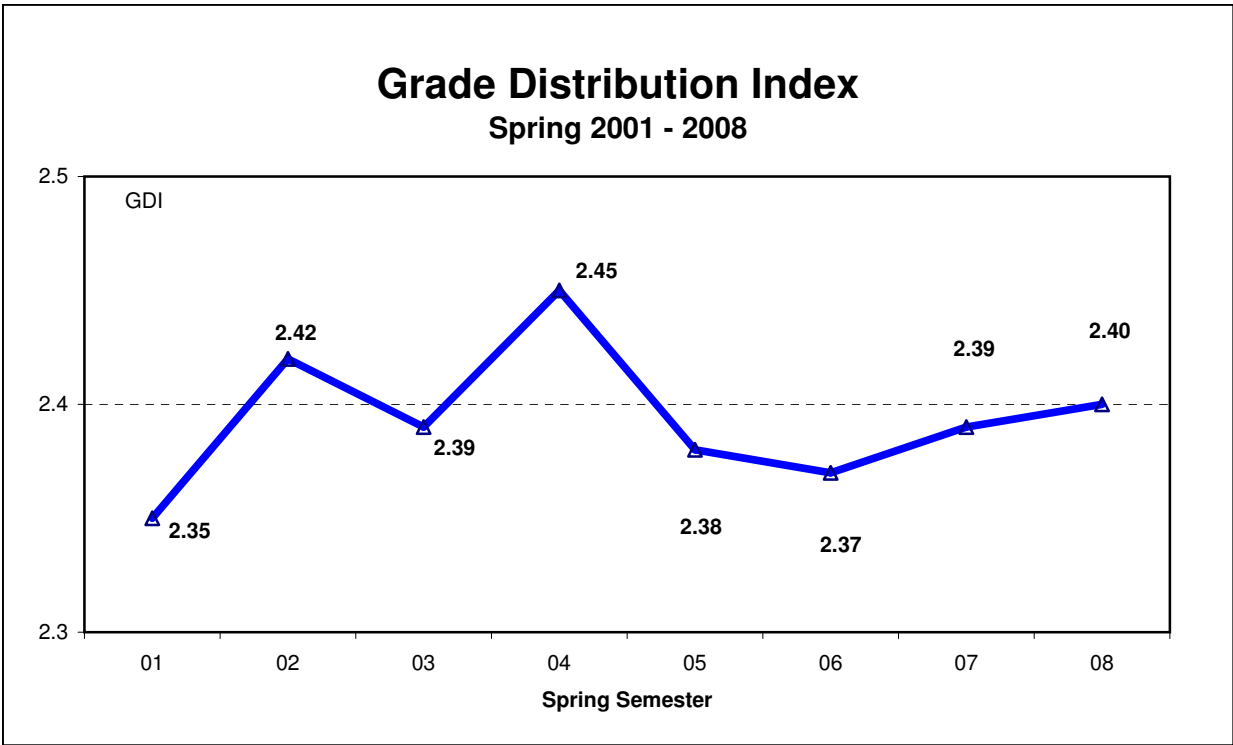
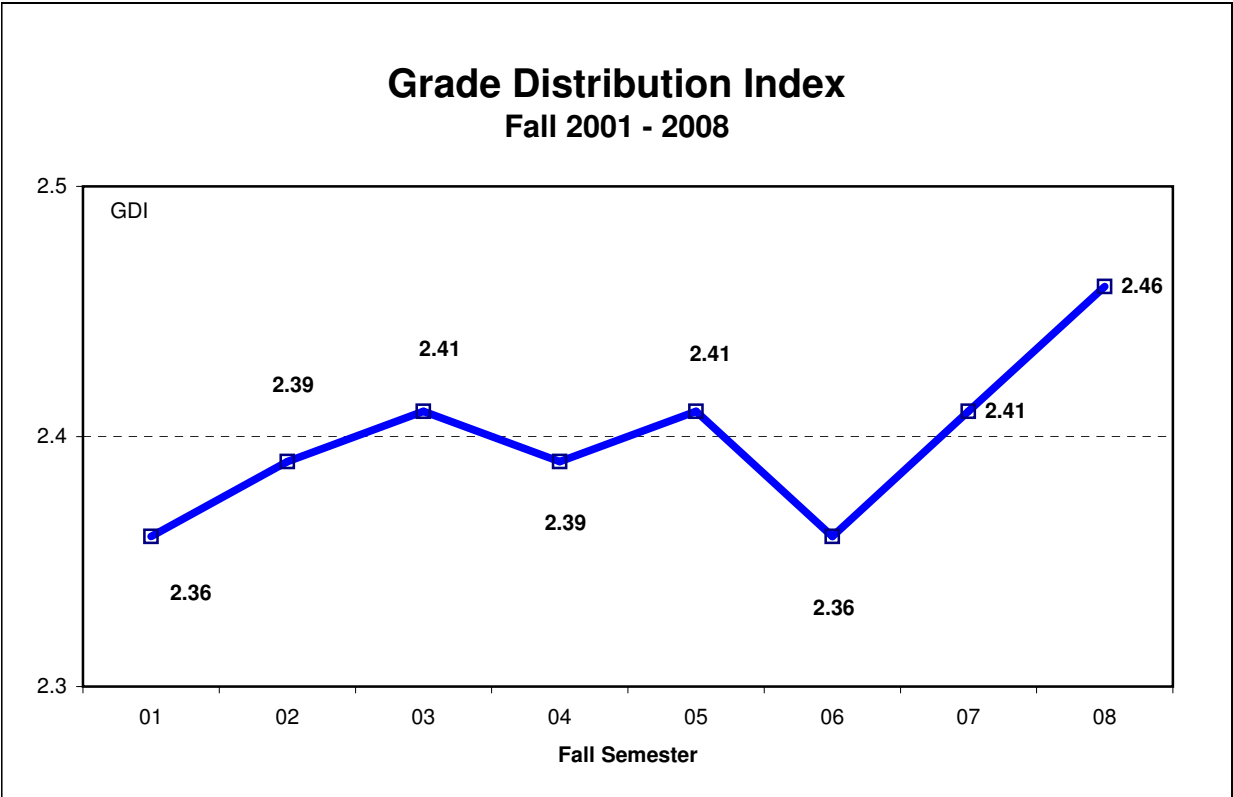


C. GRADES AND PROBATION

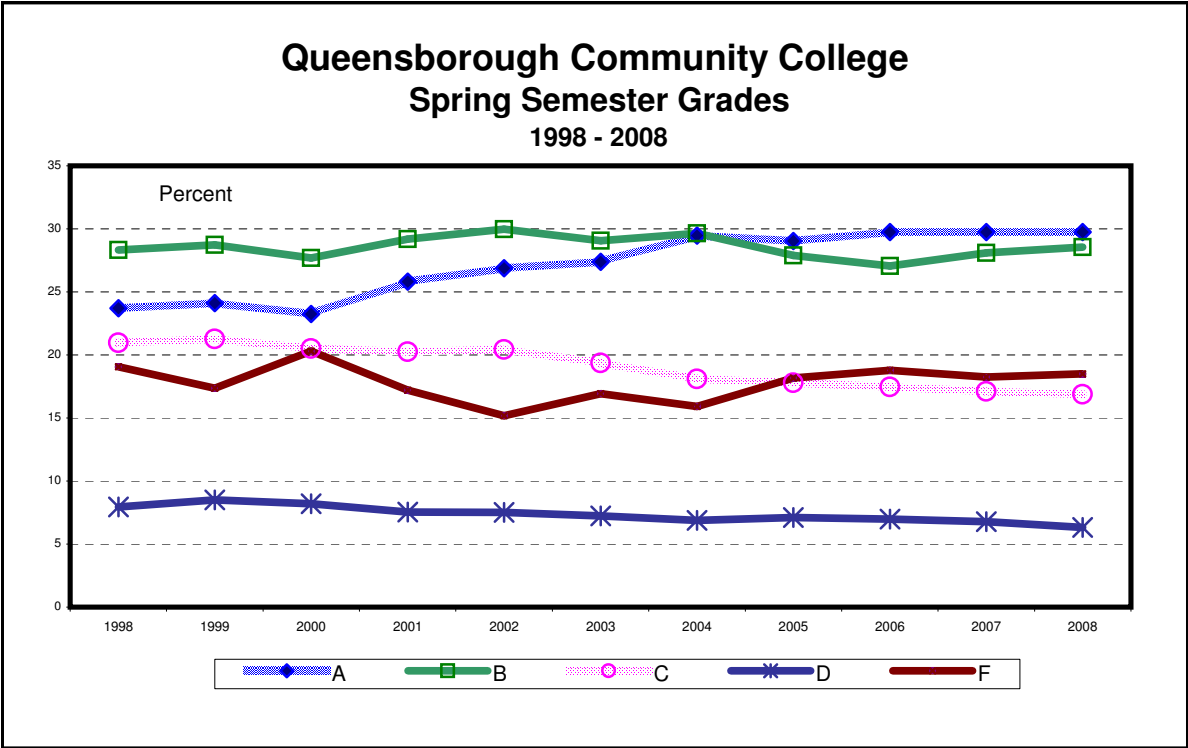
- Grade Distribution Index
- Grades
- Probation and Dismissal Statistics



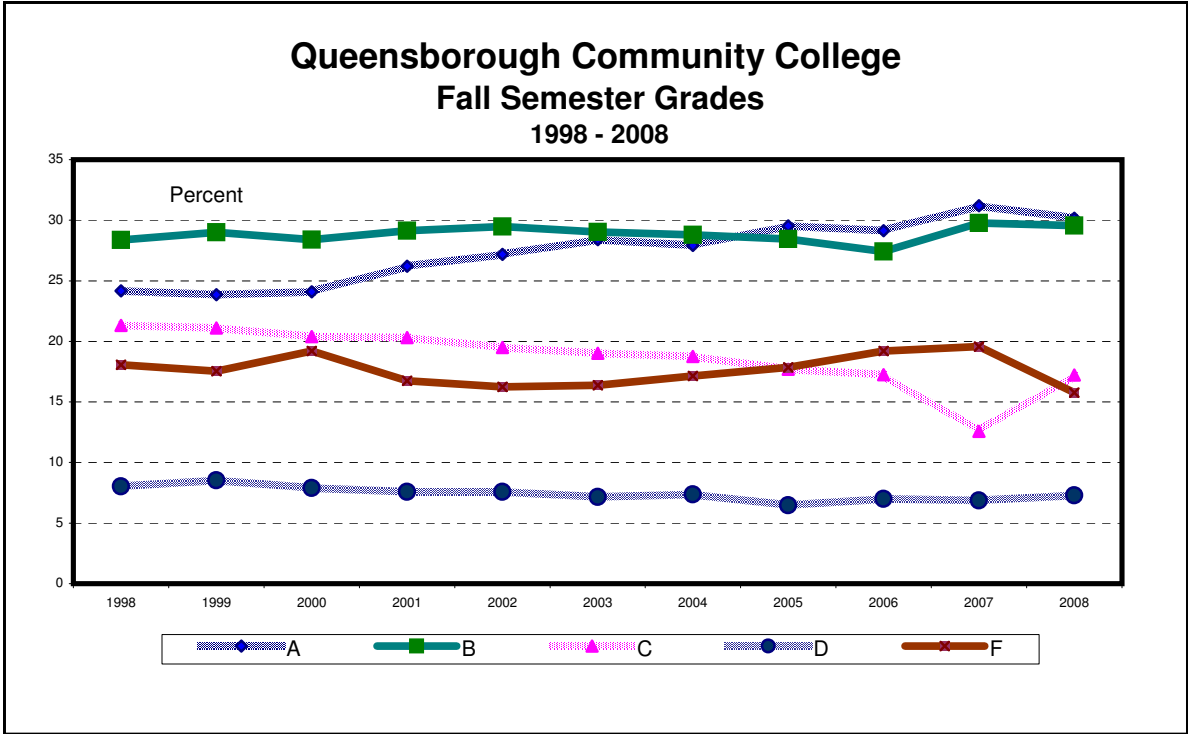
Source: Institutional Research & Assessment



Source: Institutional Research & Assessment



A includes A, A-; B includes B+, B, B-, ... & F includes F, WU.
Source: Institutional Research and Assessment



A includes A, A-; B includes B+, B, B-, ... & F includes F, WU.
Source: Institutional Research and Assessment

Probation and Dismissal Statistics

Spring 2006 - 2008

	2006		2007		2008	
Total Students*	13,004		12,812		13,134	
Academic Alert	752	5.70%	849	6.62%	854	6.50%
Academic Prob.	1,283	9.86%	1,221	9.53%	1,293	9.84%
Continued Prob.	265	2.03%	279	2.18%	267	2.03%
Initial Dismissal	570	4.38%	591	4.61%	572	4.36%
CCS Prob.**	160	28.00%	140	23.70%	99	17.30%
Net Dismissal	410	3.15%	451	3.52%	473	3.60%

Fall 2005 - 2007

	2005		2006		2007	
Total Students*	13,008		13,321		13,572	
Academic Alert	992	6.33%	1,081	8.12%	937	6.90%
Academic Prob.	1,031	7.93%	1,135	8.52%	1,111	8.19%
Continued Prob.	224	1.72%	262	1.96%	225	1.66%
Initial Dismissal	542	4.12%	570	4.28%	571	4.20%
CCS Prob.**	212	39.10%	144	25.26%	142	24.90%
Net Dismissal	330	2.53%	426	3.20%	429	3.16%

* Total students: head count before X grades

** This is the percentage of dismissed students given continued probation. All others are percentages of total students.

Source: Office of the Registrar