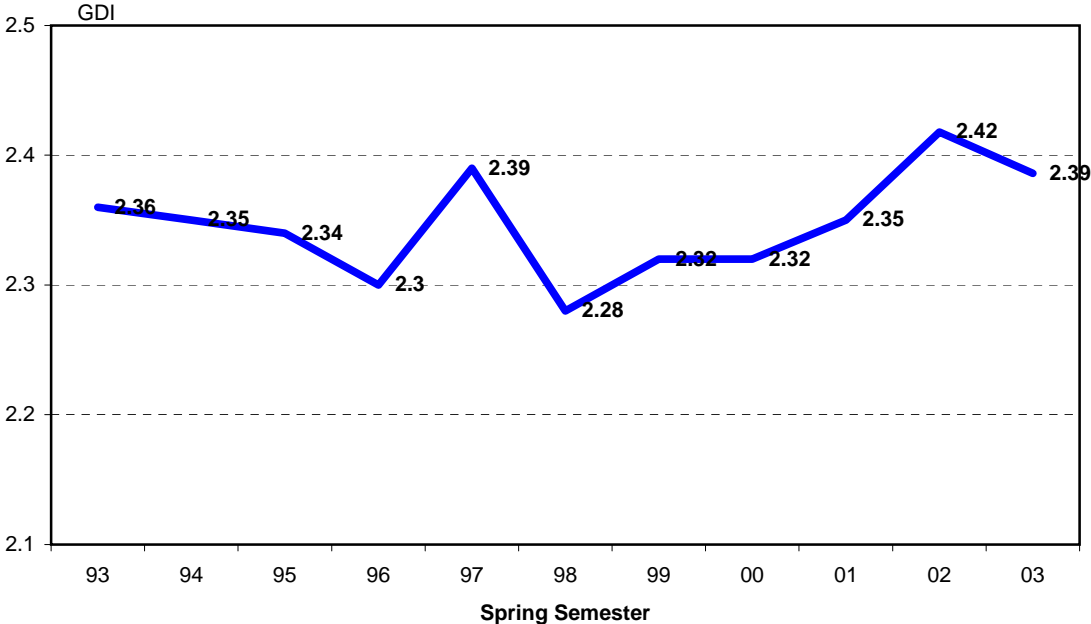


C. QCC GRADES AND PROBATIONS

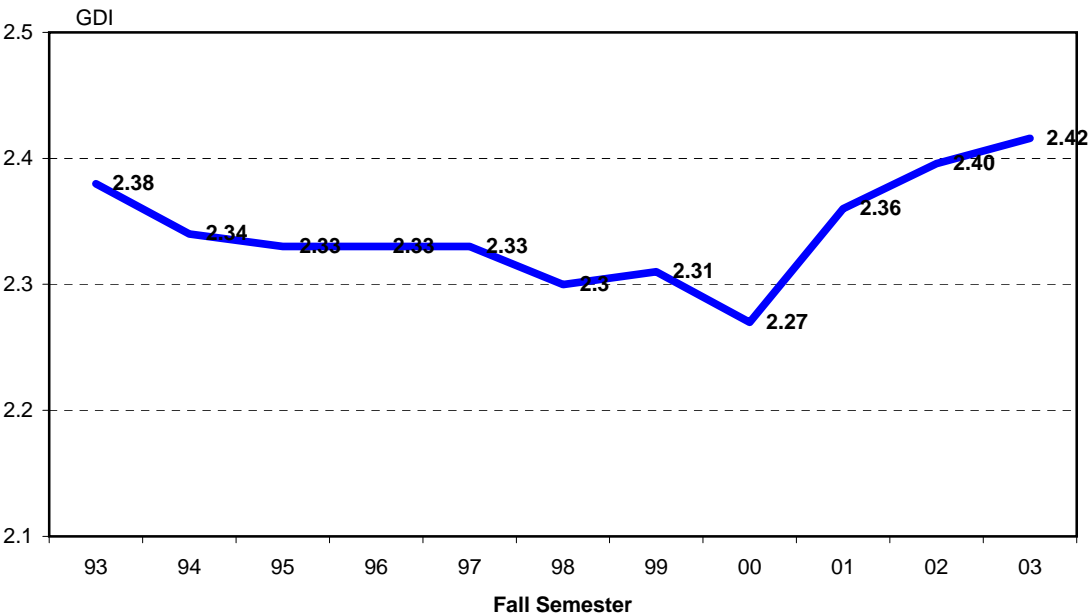
- Grade Distribution Index by semester
- Grades 1993 ~ 2003
- Probation and Dismissal Statistics – Matriculated Students
- Probation and Dismissal Statistics – Non-Degree Students

Grade Distribution Index Spring 1993 - 2003



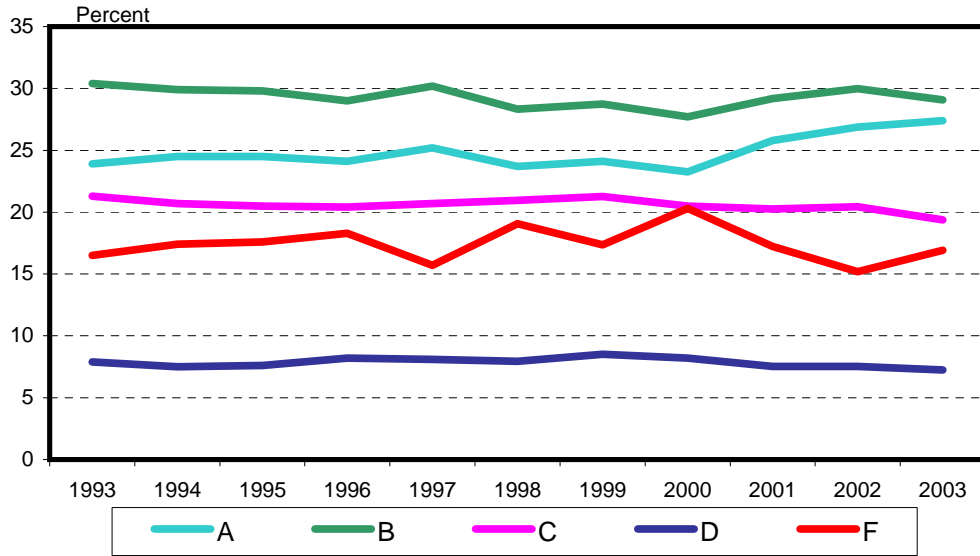
Source: Institutional Research & Assessment

Grade Distribution Index Fall 1993 - 2003



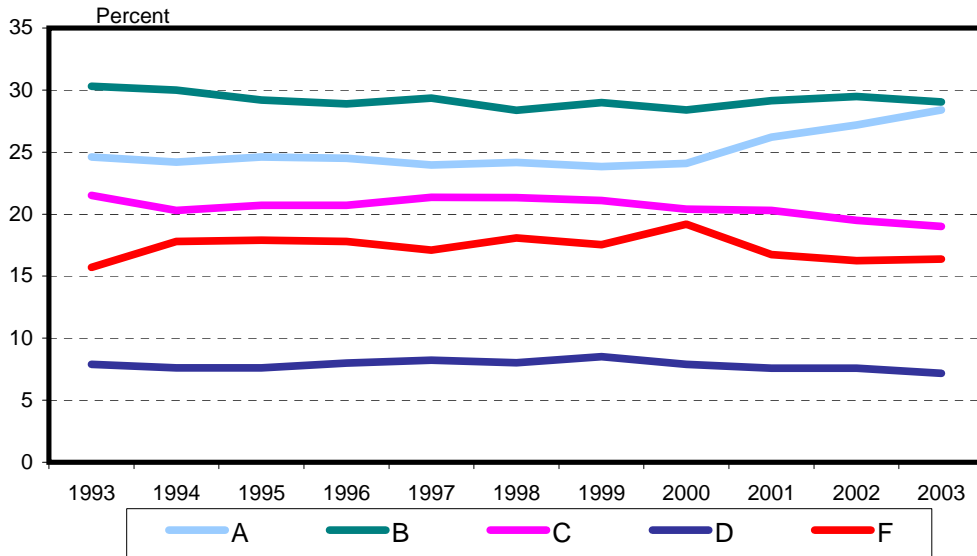
Source: Institutional Research & Assessment

Queensborough Community College Spring Semester Grades 1993 - 2003



A includes A, A-; B includes B+, B, B-, ... & F includes F, WU.
Source: Institutional Research & Assessment

Queensborough Community College Fall Semester Grades 1993 - 2003



A includes A, A-; B includes B+, B, B-, & F includes F, WU.
Source: Institutional Research & Assessment

Matriculated Students Probation and Dismissal Statistics

Spring 1994 - Spring 2003

		Academic Alert**	Probation		Dismissal		
Spring Semesters	Total Degree	% of Students	Academic Probation	Contin. Probation	Initial Dismissal	C.C.S. Actions*	Net Dismissal
'94	9,414	-	11%	2%	7%	6%	7%
'95	9,855	-	10%	2%	7%	4%	6%
'96	9,706	-	14%	2%	7%	6%	7%
'97	9,101	-	12%	2%	8%	14%	7%
'98	8,824	-	14%	3%	9%	23%	7%
'99	8,881	-	14%	25%	8%	25%	7%
'00	8,870	-	12%	5%	11%	28.6%	8%
'01	8,667	-	10.5%	5.1%	12.7%	21.1%	10%
'02	9,043	15.05%	9.2%	3.7%	7.8%	18.5%	6.3%
'03	9,878	5.73%	10.2%	3.8%	8.5%	21.9%	6.7%

Fall 1994 - Fall 2003

		Academic Alert**	Probation		Dismissal		
Fall Semesters	Total Degree	% of Students	Academic Probation	Contin. Probation	Initial Dismissal	C.C.S. Actions*	Net Dismissal
'94	10,123	-	14%	2%	5%	10%	4%
'95	9,931	-	15%	2%	5%	3%	5%
'96	9,684	-	15%	2%	5%	14%	4%
'97	9,215	-	15%	2%	5%	17%	4%
'98	9,412	-	15%	2%	7%	25%	5%
'99	9,457	-	12%	4%	11%	25.5%	8%
'00	9,396	-	15%	5%	6%	41.5%	3%
'01	9,249	-	15%	5%	8%	21.5%	6.6%
'02	9,995	8.53%	8.7%	3.8%	3.5%	25.3%	2.6%
'03	10,477	8.08%	8.2%	3.5%	4.7%	30.0%	3.3%

Note: * The percentage of dismissed students whose status changed from dismissed to continued probation by the Committee on Course and Standing.

** Academic Alert status is intended for students who have completed a total of less than 13 "credits attempted" at the end of any Fall or Spring academic semester and in need of academic improvement, academic counseling, and/or tutoring.

Source: Institutional Records & Planning

Non-Degree Students Probation and Dismissal Statistics

Spring 1994 - Spring 2003

Spring Semesters	Total Non-Degree	Academic Alert**	Probation		Dismissal		
		% of Students	Academic Probation	Contin. Probation	Initial Dismissal	C.C.S. Actions*	Net Dismissal
'94	1,996	-	22%	4%	7%	11%	6%
'95	1,841	-	12%	4%	6%	18%	5%
'96	1,248	-	13%	3%	9%	6%	8%
'97	1,333	-	12%	3%	7%	13%	6%
'98	1,263	-	11%	3%	8%	24%	6%
'99	1,246	-	12%	3%	6%	26%	5%
'00	1,343	-	8%	3%	5%	32.8%	3%
'01	1,800	-	7.4%	1.3%	4.2%	38.2%	2.6%
'02	1,887	12.1%	2.4%	1.3%	2.6%	20%	2.1%
'03	2,126	11.8%	2.7%	1.3%	2.9%	14.3%	2.5%

Fall 1994 - Fall 2003

Fall Semesters	Total Non-degree	Academic Alert**	Probation		Dismissal		
		% of Students	Academic Probation	Contin. Probation	Initial Dismissal	C.C.S. Actions*	Net Dismissal
'94	1,944	-	21%	4%	6%	22%	5%
'95	1,510	-	21%	4%	8%	3%	8%
'96	1,233	-	17%	3%	7%	25%	5%
'97	1,230	-	14%	3%	6%	38%	3%
'98	1,104	-	16%	2%	6%	41%	4%
'99	1,285	-	3%	4%	7%	29%	5%
'00	1,493	-	9%	4%	2%	62.9%	1%
'01	1,651	-	15.6%	1.9%	4.2%	23.2%	3.2%
'02	1,848	11.9%	3.9%	1.4%	1.2%	30.4%	0.86%
'03	2,056	9.48%	2.7%	1.2%	1.6%	18.7%	1.3%

Note: * The percentage of dismissed students whose status changed from dismissed to continued probation by the Committee on Course and Standing.

** Academic Alert status is intended for students who have completed a total of less than 13 "credits attempted" at the end of any Fall or Spring academic semester and in need of academic improvement, academic counseling, and/or tutoring.

Source: Institutional Records & Planning